

FRITO LAY

Gillis Gilkerson has partnered with Frito Lay, a subsidiary of PepsiCo, as both a developer and a contractor on multiple projects across the East Coast of the United States. From Maryland and Delaware to central North Carolina, our team has constructed four industrial distribution centers for the national snack food brand. In compliance with the powerhouse brand's detailed specifications, Gillis Gilkerson has played a role in all aspects of the process, from site selection through final delivery.

DELMAR, MARYLAND

Our development team identified available pad sites for new construction and worked with Frito Lay to narrow down the options. Ultimately, Gillis Gilkerson purchased a 3-acre parcel from the Town of Delmar, Maryland located at 30208 Foskey Lane. From there, our construction and development teams worked together to construct a +/- 7,700 square foot pre-engineered metal building for the client. The building features nine loading docks, as well as, securely fenced and lit truck storage.



ROXBORO | BURLINGTON, NORTH CAROLINA

As a land developer, Gillis Gilkerson partnered with Chadco Builders, a construction firm local to the Roxboro and Burlington areas, to construct two product exchange distribution centers totaling 12,000+ square feet. Principal Chris Gilkerson led Frito Lay through the development process from site selection and architectural design to engineering approvals and construction oversight.

[CONTACT TYLER BARNES](#)

410.749.4821 | TBARNES@GGIBUILDS.COM

FRITO LAY, CONTINUED

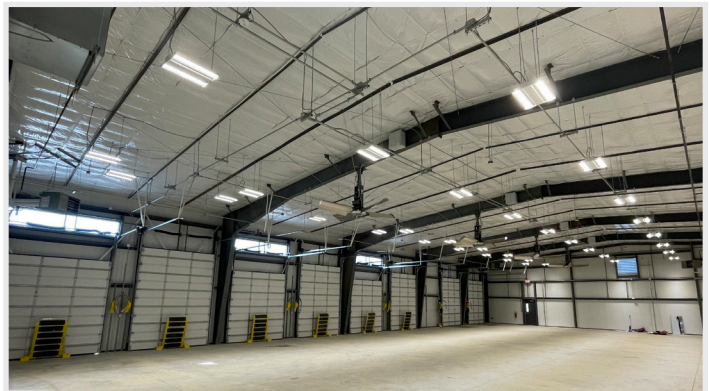
“This project was particularly exciting to lead as it involved expanding into a completely new territory”, said Gilkerson. “We have a longstanding history on the Delmarva Peninsula, so it was fresh and humbling to lead a project of this scale in North Carolina.”

The pre-engineered metal buildings each feature class-A office and warehouse space with exterior fencing and paved surfaces to accommodate tractor trailer access.



DOVER, DELAWARE

The Development and Construction teams at Gillis Gilkerson collaborated with Frito Lay to identify, analyze, and build Frito Lay's distribution center in Dover, Delaware. The + / - 8,000 square foot warehouse includes over 1,000 square feet of office space and is designed to simultaneously accommodate two large tractor trailers, and seven box vans. The structure utilizes a pre-engineered metal building with insulated walls and roof panels. The loading dock features recessed dock pits and levelers, dock seals, shelters and dock bumpers. Inside the distribution center, there are offices for daily route drivers and managers, as well as, training / conference room space.



CONTACT TYLER BARNES

410.749.4821 | TBARNES@GGIBUILDS.COM